



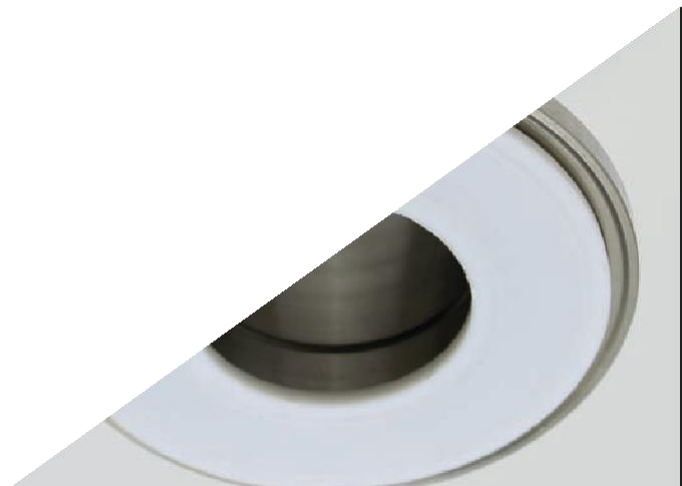
## Technical Data Sheet

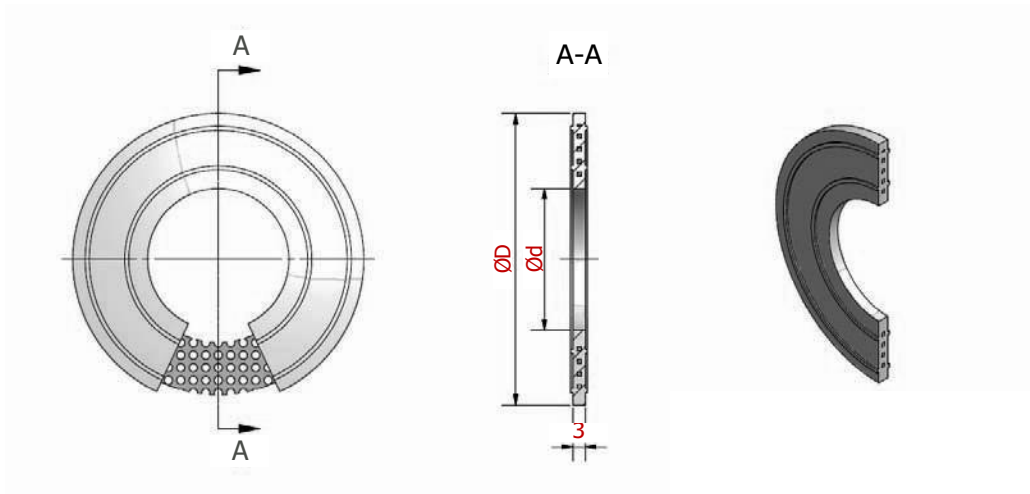
### PTFE SS-lined gaskets

PTFE Stainless steel-lined gaskets are available in standard sizes. These self-lubricating gaskets withstand the attacks of most **chemicals**, provide low permeability and minimum water absorption. They are blow-out proof and conform to TA-Luft VDI-2200 and 2400.

PTFE stainless steel lined gaskets are machined with a perforated stainless-steel insert uniformly enclosed by PTFE. They provide outstanding performance between the highly corrosion resistant PTFE layer and the perfectly centered rigid stainless-steel core elevating the gasket exceptional chemical and mechanical properties preventing cold-flow in a wide pressure-temperature range. These are highly prescribed in extreme applications for use instead of normal PTFE envelope-gaskets.

- Virgin PTFE + perforated stainless-steel core.
- High-quality raw materials.
- Compression is concentrated on the ridges enabling tight sealing under very low compression
- Self-lubricating and inert to most chemicals
- Available in standard DIN and ASA executions.
- Low permeability and water absorption
- Blow-out proof and conform to TA-Luft VDI-2200 and 2400.
- Resistant to pressure up to 100 bar.
- Temp. Range -200°C to +250°C



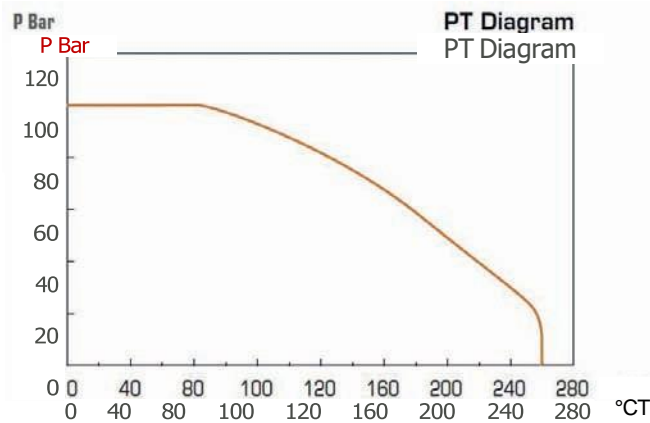


## Installation

Easy to install.

For best efficiency and optimized service life, these tightening torques (Nm) on flange fixing screws should be ideal:

DN	Nm
25	20
40	20
50	27
65	34
80	41
100	47
125	54
150	60
200	68
250	75
300	82
350	95
400	102
450	108
500	115
600	122





## Standard DIN & ASA

DIN2690 - ØD					
DN	Ød	PN10	PN16	PN25	PN40
6	10	38	38	38	38
8	14	43	43	43	43
10	18	45	45	45	45
15	22	50	50	50	50
20	28	60	60	60	60
25	35	70	70	70	70
32	43	82	82	82	82
40	49	92	92	92	92
50	61	107	107	107	107
65	77	127	127	127	127
80	90	142	142	142	142
100	115	162	162	168	168
125	141	192	192	195	195
150	169	218	218	225	225
200	220	273	273	285	292
250	274	328	330	342	353
300	325	378	385	402	418
350	368	438	445	458	475
400	420	490	497	515	547
450	470	540	557	565	572
500	520	595	618	625	628
600	620	695	735	730	745

ANSI - B - 16.21 - A			
NPS	Ød	150"	300"
1/2"	21	47	53
3/4"	27	57	66
1"	33	66	73
1 1/4"	42	76	82
1 1/2"	48	85	95
2"	60	104	111
2 1/2"	73	123	130
3"	89	126	149
3 1/2"	102	161	165
4"	114	174	180
5"	141	196	215
6"	168	222	250
8"	219	279	307
10"	273	339	361
12"	324	409	422
14"	356	450	485
16"	406	514	539
18"	457	549	596
20"	508	606	654
22"	559	660	704
24"	610	717	774